

Welcome to the latest update for the IMPACT Project for the Ontario Local Innovation Partnership (LIP).



Updates and Request for Input

March 9, 2015

In This Update:

- **Patient Engagement in the Ontario Local Innovation Partnership (LIP)**
- **Request for Input**
- **About IMPACT**

Patient Engagement in the Ontario Local Innovation Partnership (LIP)

At our last deliberative forum you suggested that we consult with patient representatives to better understand the challenges that they face accessing primary care in the Champlain region.

You will recall that the goal of the survey and deliberative forum was to identify a key access issue for the Champlain LHIN. You identified that the individuals facing the most significant barriers to primary care within the Champlain LHIN are individuals with complex needs resulting from mental health challenges and/or multiple health conditions within the context of psychosocial conditions that make accessing appropriate care particularly difficult (e.g., social isolation, low health literacy, or low income).

We listened to your advice and have been working with Patient Engagement Specialists at the Champlain LHIN as well as patient advocacy groups at various community and service organizations

relevant to the access issues that we defined with your help through the survey and deliberative forum.

Focus groups with patient representatives will be conducted in the coming weeks, and we will seek the ongoing participation of one or more of these individuals on our LIP Core Team. This step will help ensure that the intervention that is selected is relevant to patients' needs.

Request for Input

We need your help for “Project 3” of the IMPACT study!

This subproject involves exploring the findings of several large primary care surveys that have been conducted in the last decade in countries such as Canada and Australia. There are a number of access related questions in these surveys.

We are asking for your help to prioritize which of the questions in these surveys are most relevant to primary care providers and decision-makers in the Champlain LHIN, and aligned with the LHIN's identified priorities. [Here](#), you will find a list of questions that we have selected as being the most relevant.

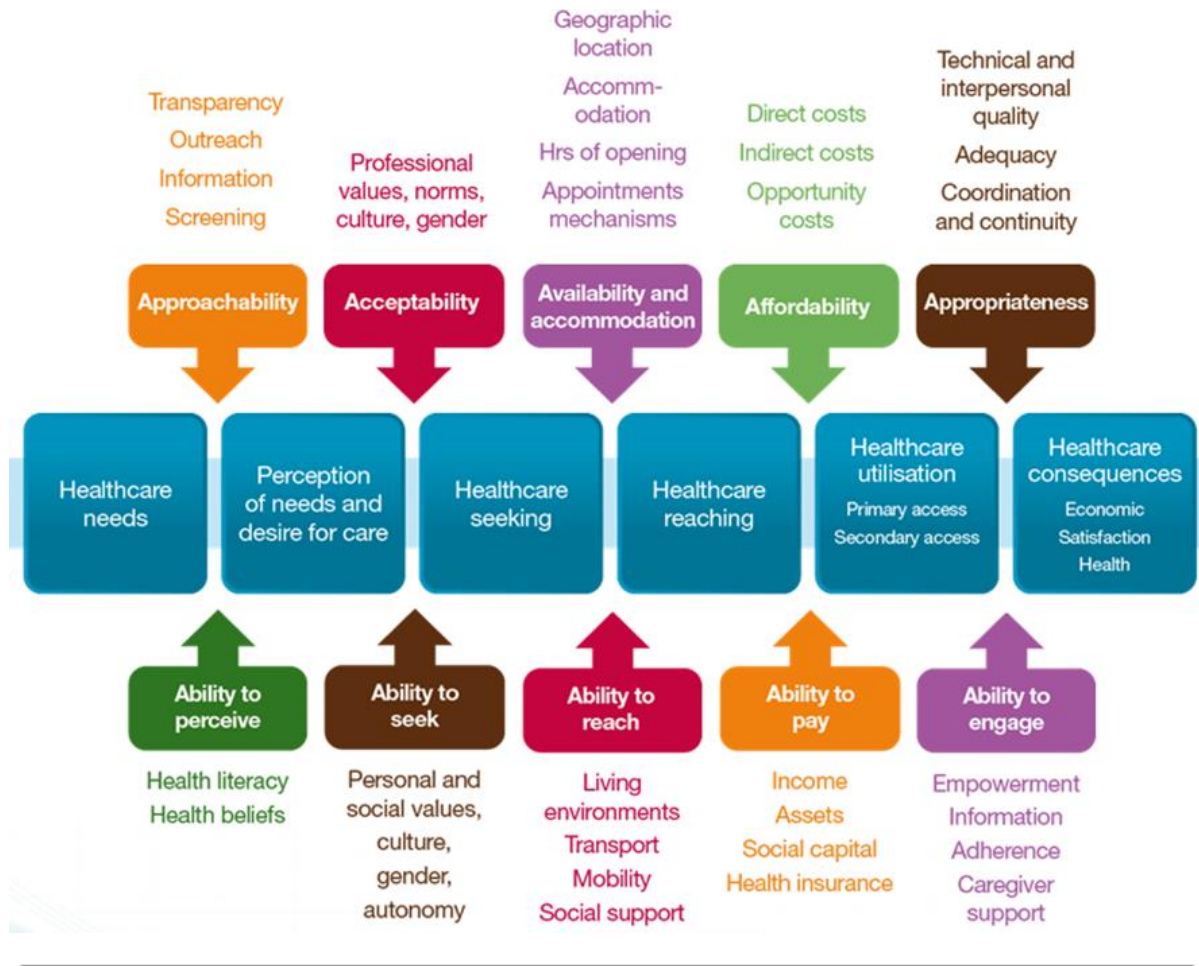
Can you kindly confirm that the questions that we have pre-selected are relevant to the key access issue(s) to primary care within the Champlain LHIN? [The original list of questions is available [here](#).]

To ensure that your feedback is included, please respond to drolfe@bruyere.org by **Friday, March 13th**.

About the IMPACT Project

IMPACT is a five-year research program funded nearly \$5,000,000 from the Canadian Institutes of Health Research and the Australian Primary Health Care Research Institute to help address the challenges that vulnerable populations face in accessing appropriate primary health care in their region. IMPACT aims to work with consumers, policy makers and providers in six communities (three in Australia and three in Canada) to identify, refine and then trial ‘world’s best practice’ innovations to improve access to primary health care particularly for vulnerable populations.

The IMPACT project is based on a model (shown below) of access to primary health care (PHC) that sees access at the interface between five dimensions of client abilities (ability to perceive, seek, reach, pay for or engage) and five dimensions of service accessibility (approachability, acceptability, availability/accommodation, affordability and appropriateness).



Thank you for your valued input and time!

If you have any questions or comments please get in touch. We'd love to hear from you!

Danielle Rolfe, Ontario LIP Coordinator at drolfe@bruyere.org

Simone Dahrouge, IMPACT Principal Investigator at sdahrouge@bruyere.org



Keep Informed!

Follow the IMPACT project on Twitter.

Visit us at www.impactresearchprogram.com
