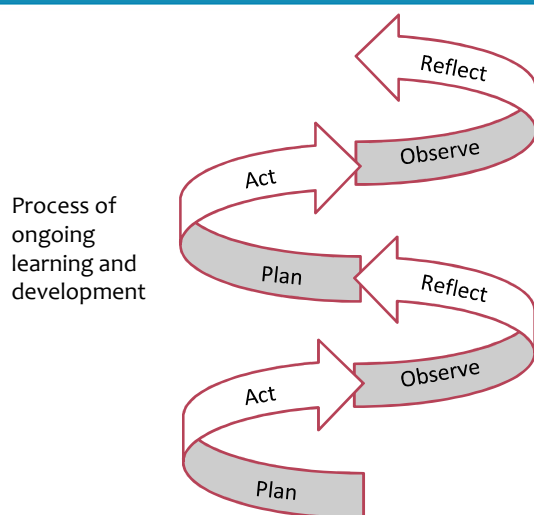
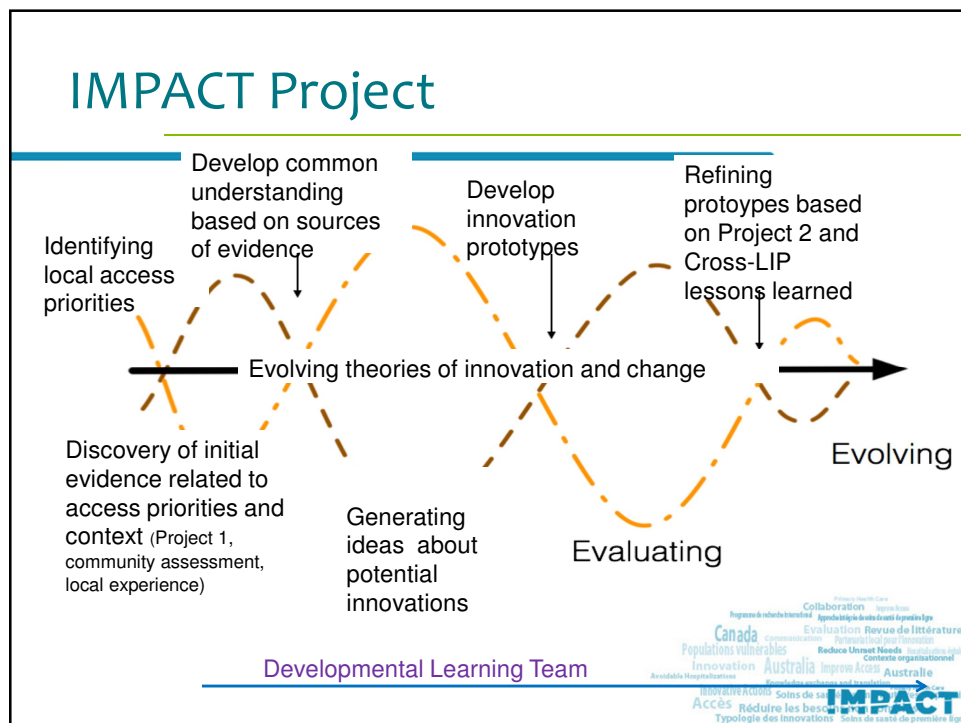
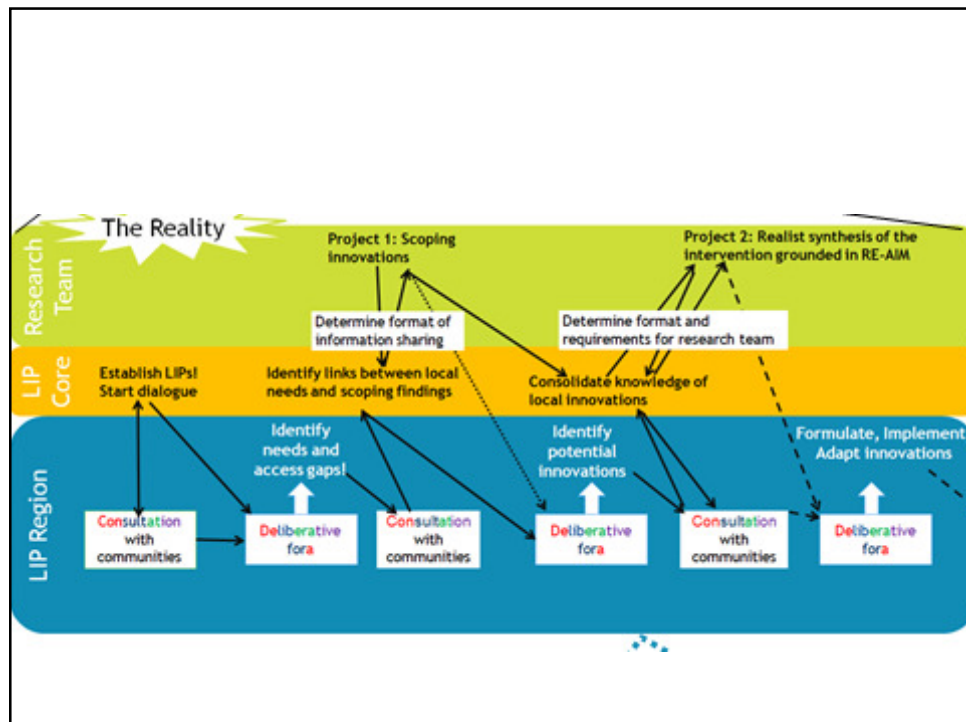


Our approach – participatory & developmental



See: Jamie A.A. Gamble. A Developmental Evaluation Primer. The J.W. McConnell Family Foundation. Online: <http://thepod.cfccanada.ca/sites/thepod.cfccanada.ca/files/A%20Developmental%20Evaluation%20Primer%20-%20McConnell%20Foundation.pdf>

IMPACT



Rapid Evaluation - 2014

Findings

- Purpose
- Structures & Governance
- Roles, responsibilities and functions
- Risks identified by interviewees

Plans & Actions

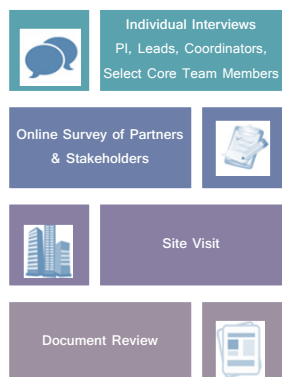
- Engagement & Communication
 - Protocol clarity
 - Coordinator meetings
- Governance changes
 - Greater iteration between Projects & LIPs



Developmental Evaluation, 2015

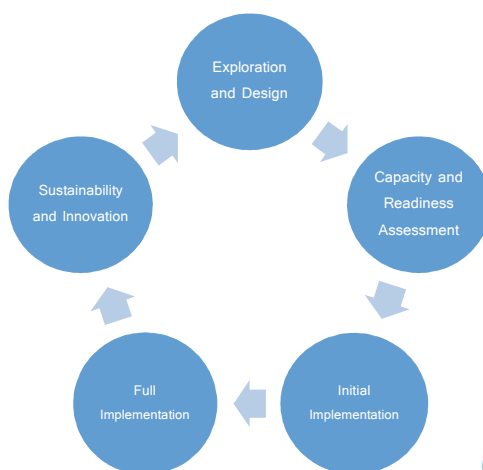
IMPACT

Data collection



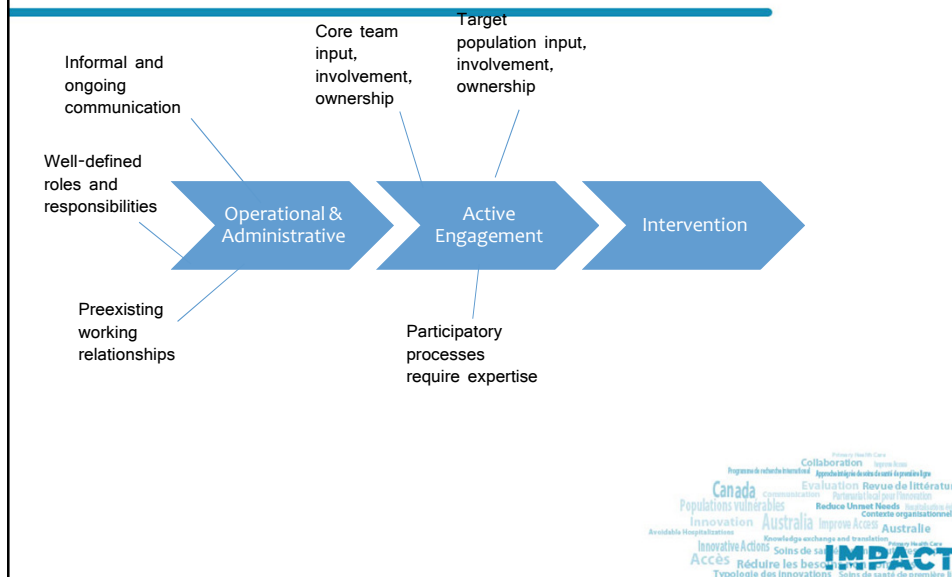
Primary Health Care
Collaboration
Progression de la recherche
Évaluation
Revue de littérature
Canada
Populations vulnérables
Innovation
Australia
Innovative Actions
Accès
Réduire les besoins
Typologie des innovations
Secteur de santé de première ligne
IMPACT

2015 - Stages of implementation – linking and moving forward



Primary Health Care
Collaboration
Progression de la recherche
Évaluation
Revue de littérature
Canada
Populations vulnérables
Innovation
Australia
Innovative Actions
Accès
Réduire les besoins
Typologie des innovations
Secteur de santé de première ligne
IMPACT

Results – findings / theme



Our Partners



Funding Agencies



Australian
National
University

Fonds de recherche
Santé
Québec

The research reported in this program is a project of the APHCRI, which is supported by a grant from the Australian Government Department of Health. The information and opinions contained in it do not necessarily reflect the views or policy of the Australian Primary Health Care Research Institute or the Australian Government Department of Health.



Canada
Populations vulnérables
Innovation
Avoidable Hospitalizations
Innovative Actions
Accès
Typologie des innovations
Health Equity
Intervention Implementation
Mise en oeuvre des interventions

Australia
Improve Access
Australie
Knowledge exchange and translation
Soins de santé communautaires de première ligne
Soins de santé de première ligne
Local Innovative Partnerships
Comprehensive Primary Health Care
Community-Based Primary Health Care

Evaluation
Revue de littérature
Partenariat local pour l'innovation
Reduce Unmet Needs
Contexte organisationnel
Primary Health Care
Soins de santé communautaires de première ligne
Soins de santé de première ligne
Local Innovative Partnerships
Comprehensive Primary Health Care
Community-Based Primary Health Care
Littérature Rev

Cathie Scott, Virginia Lewis,
William Miller, Grant Russell,
Jeannie Haggerty, Simone
Dahrouge, Mark Harris

On behalf of IMPACT team.

IMPACT